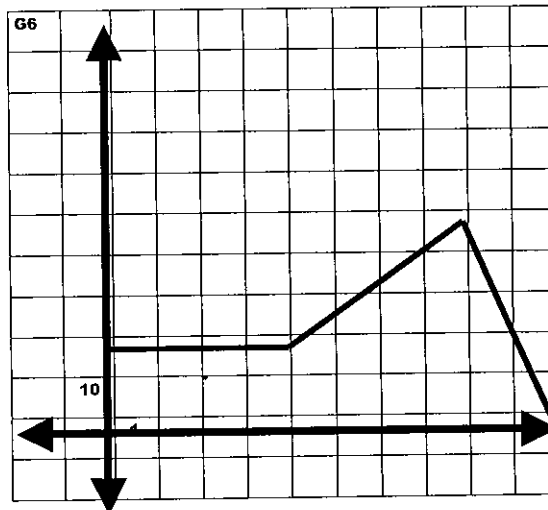
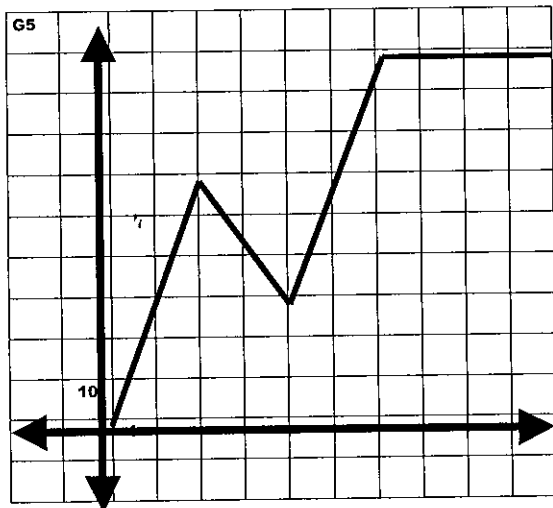
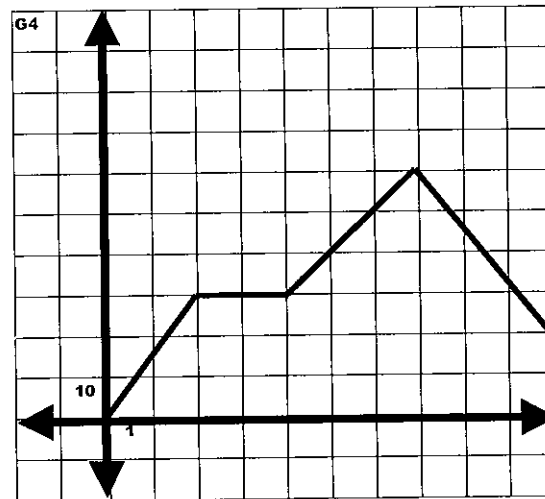
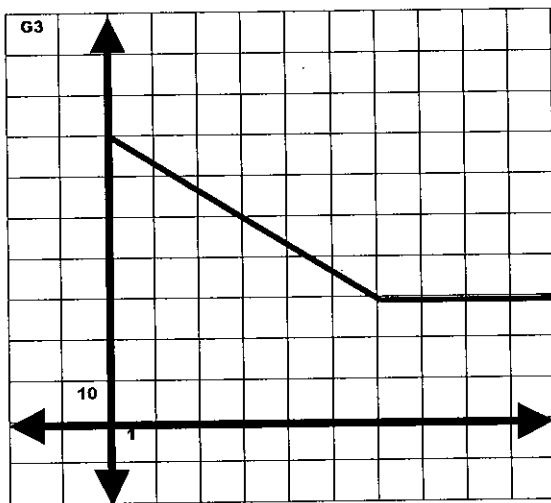
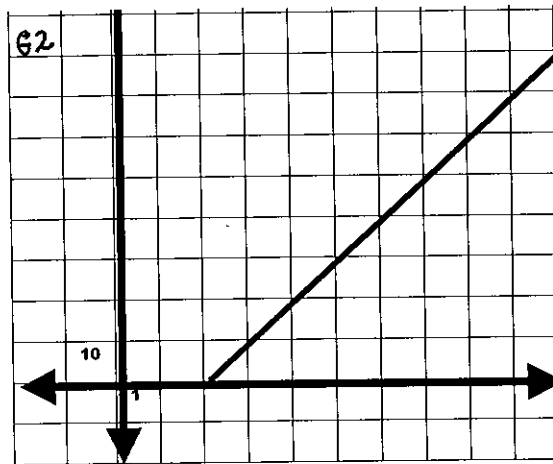
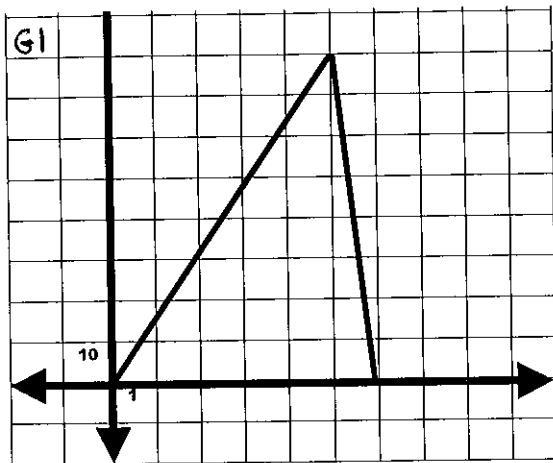
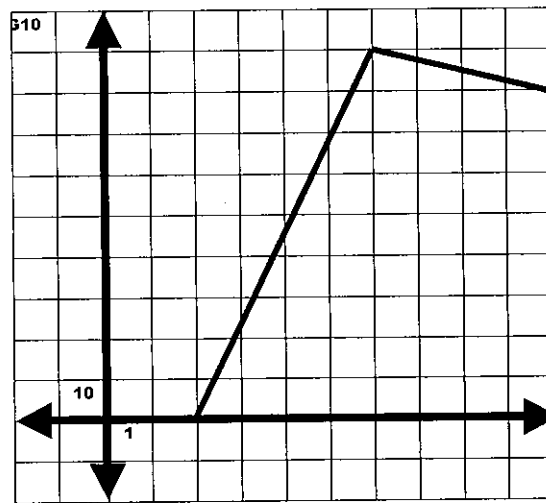
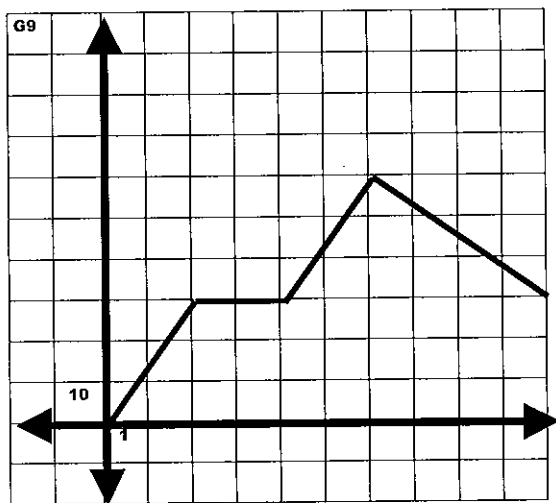
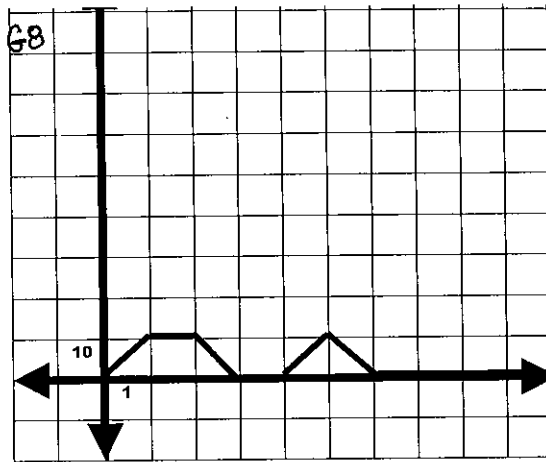
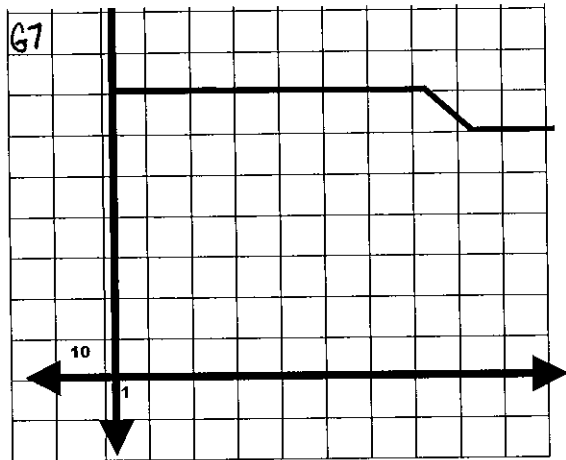


<p>D8</p> <p>After 5 minutes of climbing at a constant rate, Bobby's plane malfunctioned and crashed to the ground.</p>	<p>D5</p> <p>After two minutes, Susan's plane took off at a rate of 10 feet per minute.</p>	<p>D10</p> <p>After elevating 30 feet in 2 minutes, Steve maintained his plane the same height for two more minutes before elevating it at a slower rate before he brought his plane in for a landing.</p>
<p>D6</p> <p>After letting his plane drop 40 feet in six minutes, tom maintained the plane at a steady height for the rest of the flight.</p>	<p>D7</p> <p>After rising and falling for 6 minutes, Lynn's plane reached the highest altitude and maintained it the next few minutes.</p>	<p>D3</p> <p>Mary's plane maintained a constant altitude for 4 minutes, it then rose thirty more feet before stalling the engine, but she was able to glide it safely to the ground.</p>
<p>D2</p> <p>After Juan kept his plane at a steady altitude for 7 minutes, he decided to bring it down to 60 feet for the rest of the trip.</p>	<p>D9</p> <p>Albert's plane got airborne for three minutes before it came down. After he fixed the rudder, the plane could only stay in the air for a few more minutes before Albert decided to quit.</p>	<p>D1</p> <p>Bob's plane taxied on the ground for 2 minutes before it finally rose to a height of 90 feet but he couldn't maintain the altitude.</p>
<p>D4</p> <p>After elevating for 2 minutes, Jerry maintained his plane the same height for two more minutes before elevating it at the same rate as when he started before he brought his plane in for a landing.</p>		





Graph	Description
G1	
G2	
G3	
G4	
G5	
G6	
G7	
G8	
G9	
G10	